

## Finishing the Moon Model

Paint the model.

Use a primer white coat.

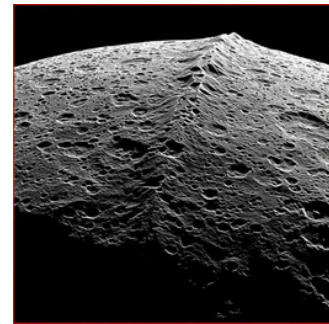
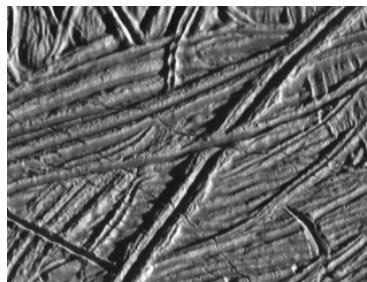
This will help the students understand the contours of their model and determine where the best place for the features will be.



To build up ridges, mountains, or crater shapes a good resource is a product from Dick Blick acrylic medium gel or modeling paste. It applies like a thick paint, will hold a shape, dries hard, and can be painted.



Finish the models by adding color value and painting it to enhance mountain ranges, crater ejecta, and other formations on the moons. Using shadowing techniques can show Highlands, ridges, polar caps, frozen areas, and depressions.



A collection of different sizes and types of paintbrushes as well as some area for mixing paints together would be good additions to your project.

There are some videos to help you learn how to add color value to the moon model and can be found in a separate attachment.

