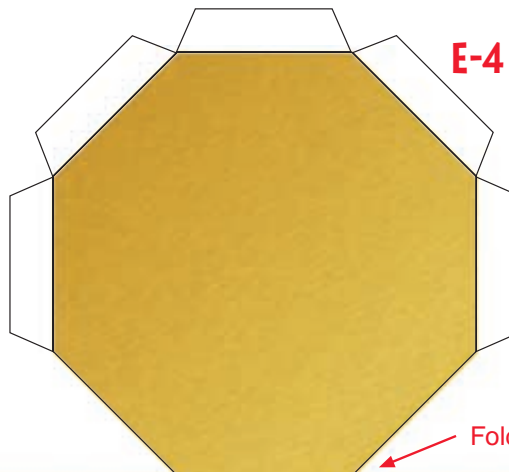




NEAR SHOEMAKER BODY



Fold all flaps down

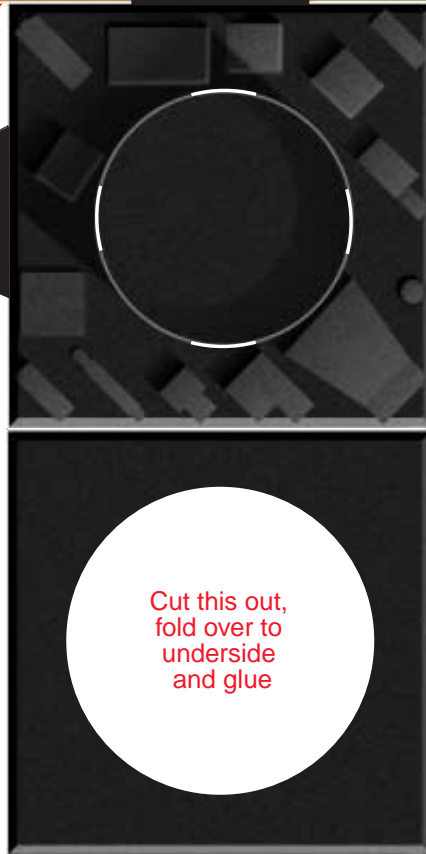
Fold

E-3



Tape this flap to inside

E-3B



Cut along white slits ONLY, then fold

Cut along white slits ONLY, then fold

E-3A

E-2

Fold flaps down

Cut along white slits

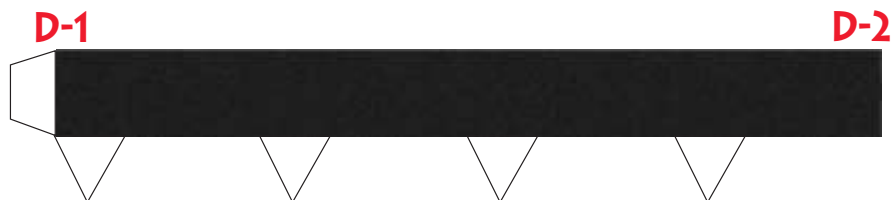
Fold here

Cut this out, fold over to underside and glue

E-1



DOCKING RING



D-1

D-2